

a) The **Menu bar** contains links to global elements like libraries, as well as menus and options for project-specific settings.

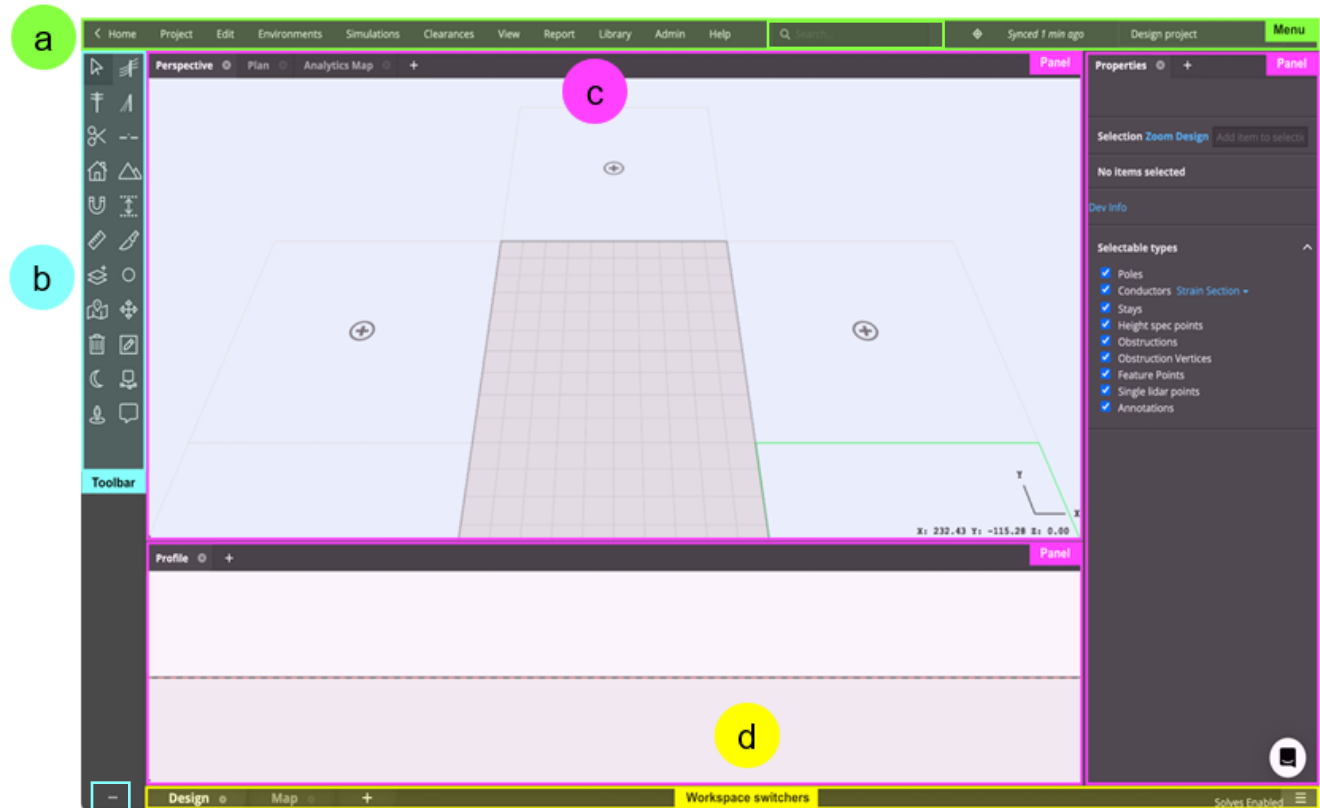
- The **Home** button returns the user to the Neara Home Page.
- The **Search** function is the place to type in pole numbers or project names and locate these results in the perspective view.

b) The **Toolbar** displays tools relevant to the current view and task. To modify which tools are shown in the Toolbar, click the ellipsis (...) at the bottom of the toolbar panel.

c) **Panels** are the main work areas within Neara. Panels may be re-sized and re-positioned as required.

- The **Properties** tab is always part of the right-hand panel. This tab allows designers to modify settings for the tool or objects that are currently selected.
- The (+) button in any panel will open a popup as shown on the next page. Designers can add any of the items from the pop-up to any of the panels in their workspace.

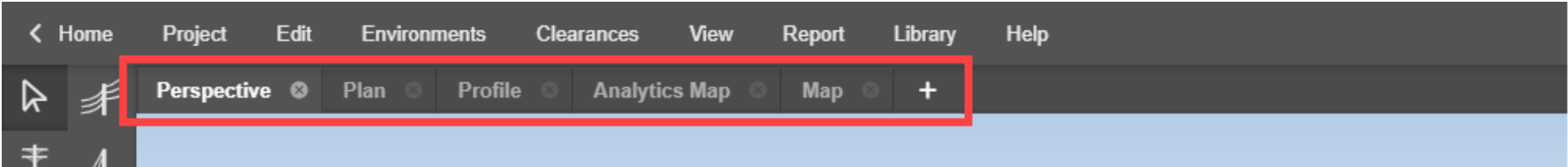
d) **Workspace switchers** allow designers to move between Project Workspaces and access reports showing design information.

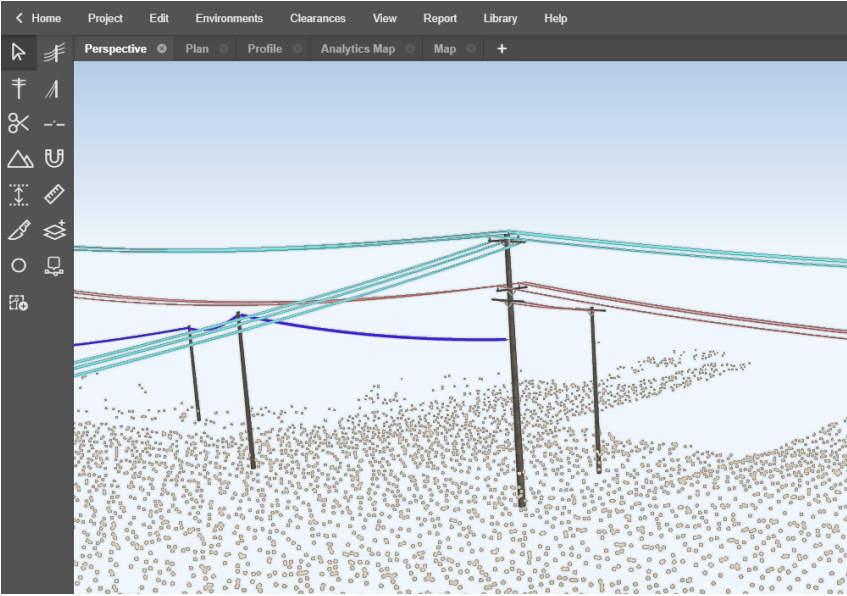


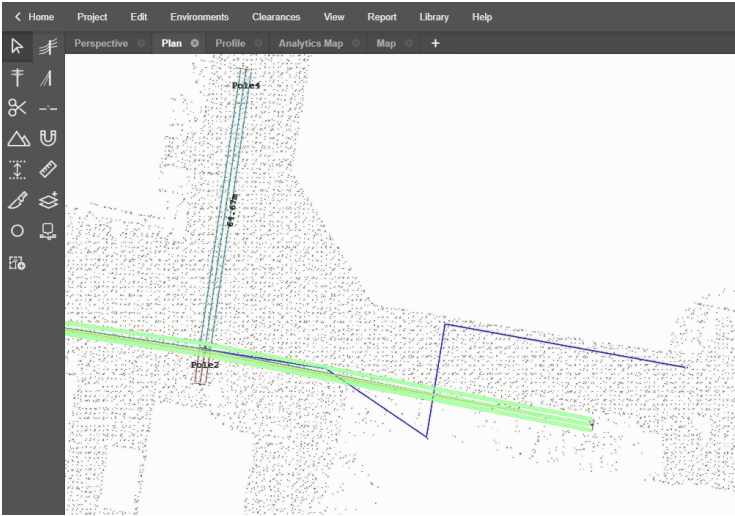
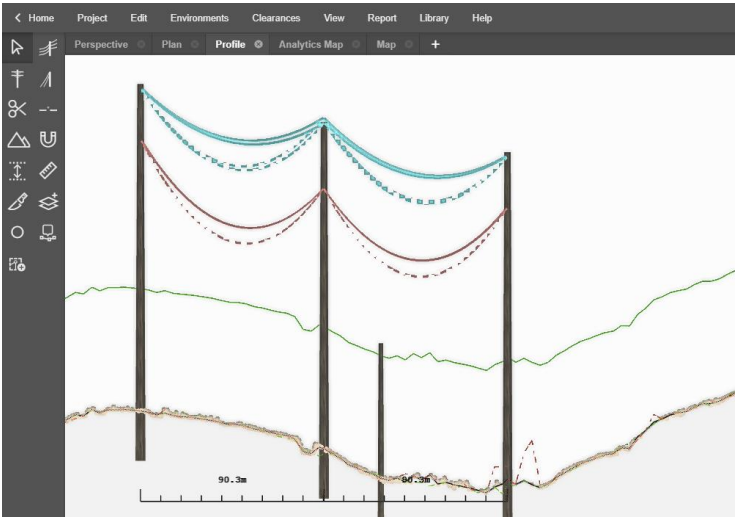
The workspace layout can also be customised to the designer's preferences:

- ✓ Panels can be moved and resized
- ✓ Tabs can be moved within a workspace
- ✓ Tabs can be moved between panels
- ✓ Tabs can be 'snapped' to the side of another panel to create a new panel (the new panel will contain only that tab)

There are five (5) main views that can be used in the Neara Workspace:



View	Screenshot
<p>Perspective – also referred to as the 3D Perspective view. This is the primary view to be used for design and visualisation. Refer to <i>“Control the 3D Views QRG”</i> for navigating in this view.</p>	 A screenshot of the Neara QRG workspace in the Perspective view. The workspace shows a 3D model of a power line project. The terrain is represented by a dense cloud of brown points. Several power lines are shown in different colors (blue, green, red) and are supported by black poles. The sky is a light blue gradient. On the left side of the workspace, there is a vertical toolbar with various icons for navigation and editing. The top of the workspace shows the same menu as the previous image, with 'Perspective' selected.

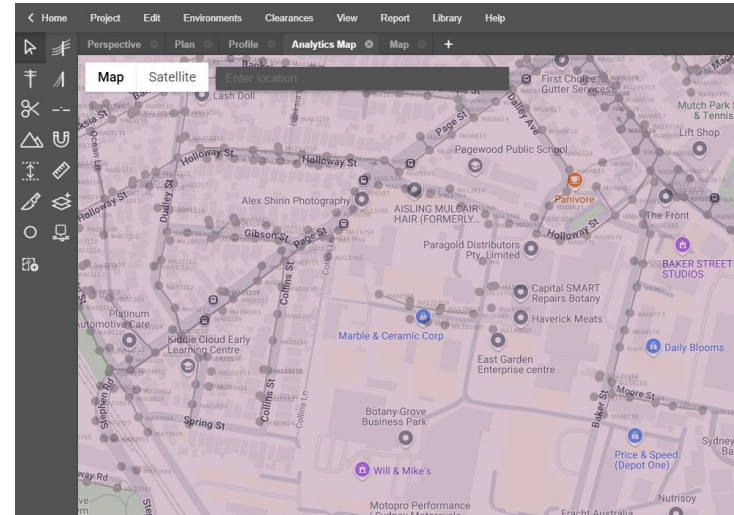
View	Screenshot
<p>Plan – shows a top-down-only view of the project model.</p> <p>This view may be useful for assessing blowout conditions to boundary / easement lines.</p>	
<p>Profile – displays a simplified side-on view of the design model. This view displays objects within a 'ribbon' that runs parallel with the line. The width of this 'ribbon' is set with the “Profile View – Offsets” limit in the Project / Design Settings menu.</p>	

View

Analytics Map – allows the designer to search for a location via an address. It displays a Google Map-style view with an overlay of LiDAR coverage and Auto-model pole locations.

Designers may also right-mouse click and “**Jump to Location**” from this view.

Screenshot



Map – a simple Google Maps view with an address search function.

Note: Designers cannot “**Jump to Location**” from this view; instead, use the **Analytics Map** for this function.

